

Digital twin for commissioning and process optimisation

MSA-Service - Machiel 't Hoen en Ralf Stam

MSA-Service

- Automation
- Maritime
- 30 colleagues
- Hardinxveld



Digital twin...?

Operational data stored over time (datalogging)

human input



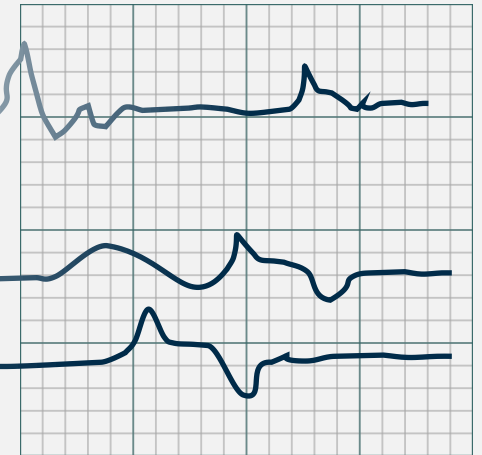
measurements



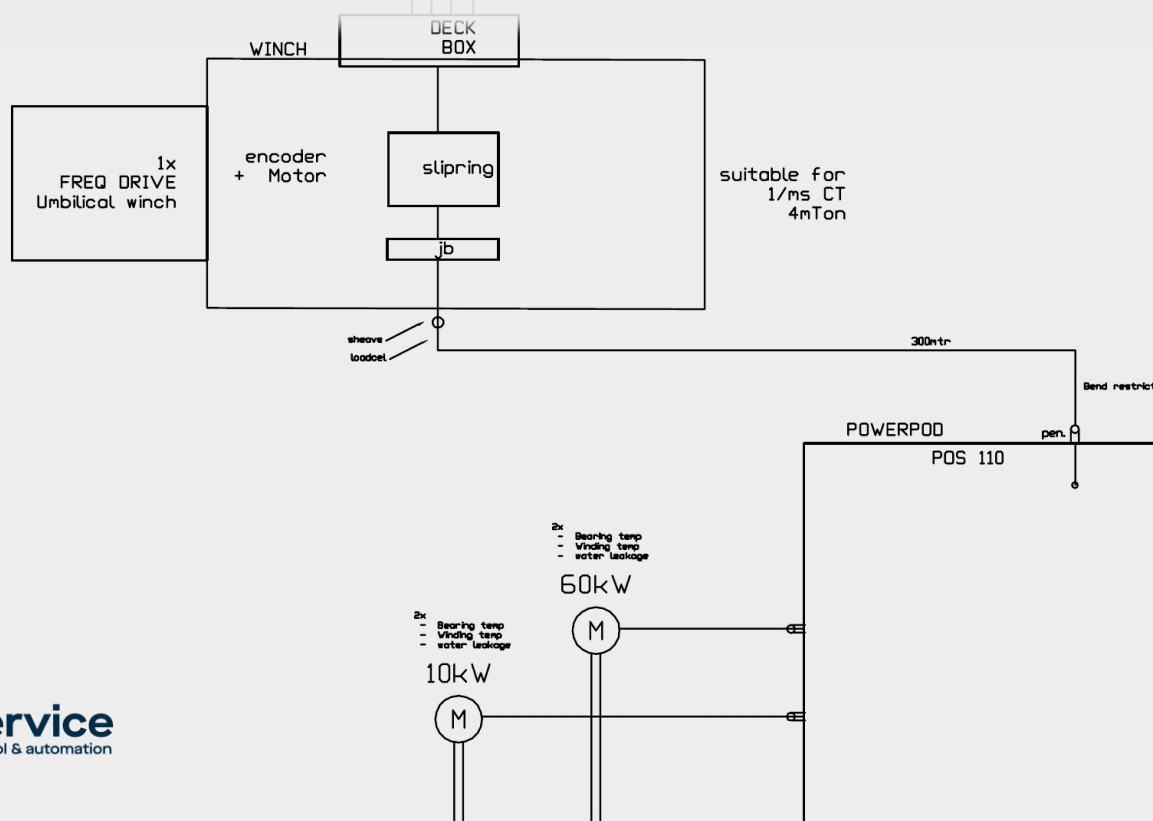
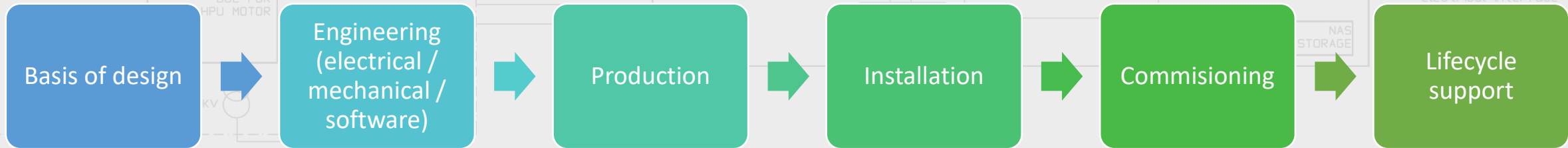
controller



actuators -
output



Why a digital twin in the production process?



Why a digital twin in the production process?

Trouble shooting

Fast data (milliseconds)

Live data

Accessible for everyone



Why a digital twin on board?



Trouble shooting
-> first time right



Why a digital twin on board?



Develop?

Dataloggers

(IIoT) cloud platforms

Multipled



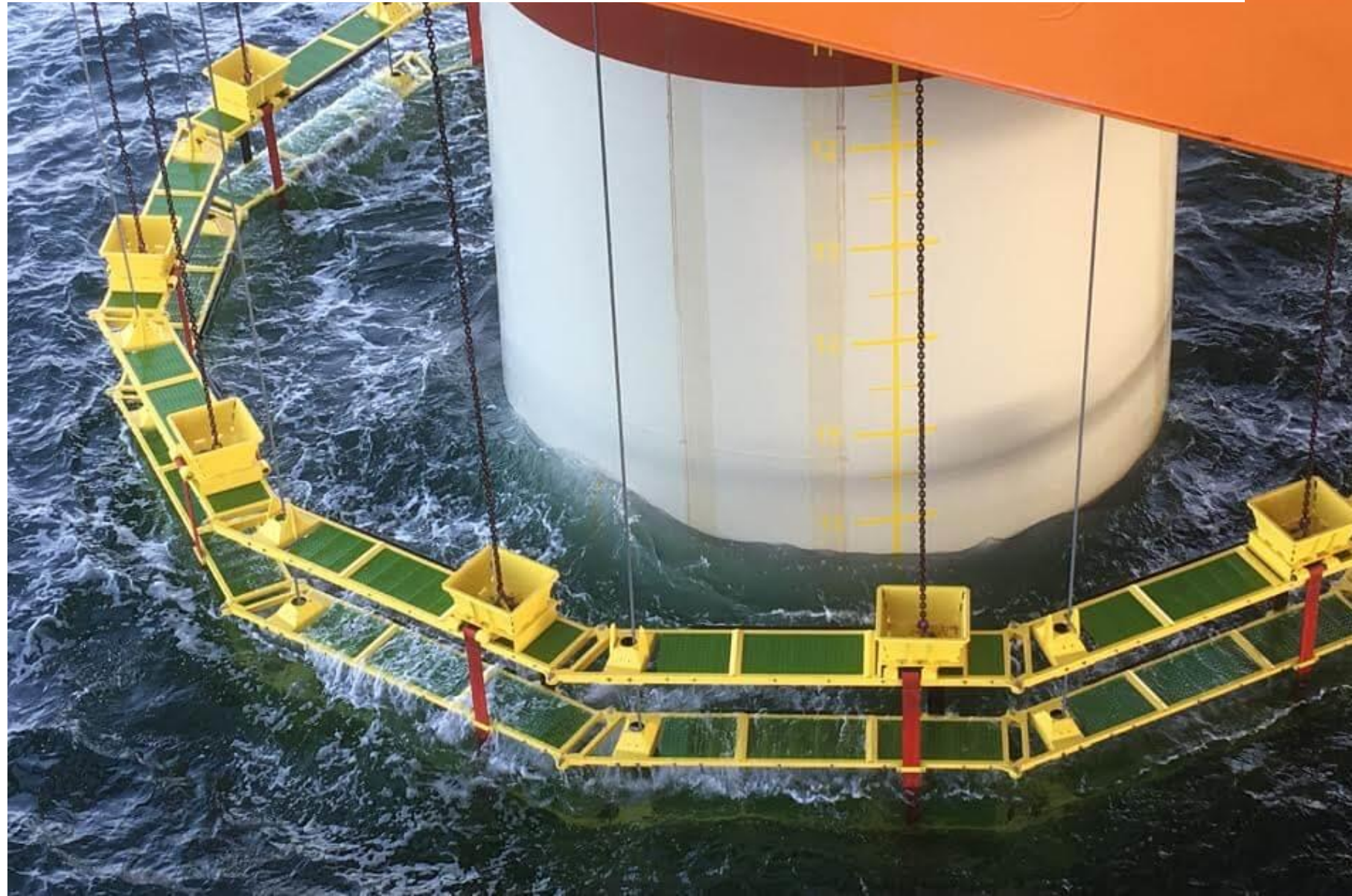
Development challenges

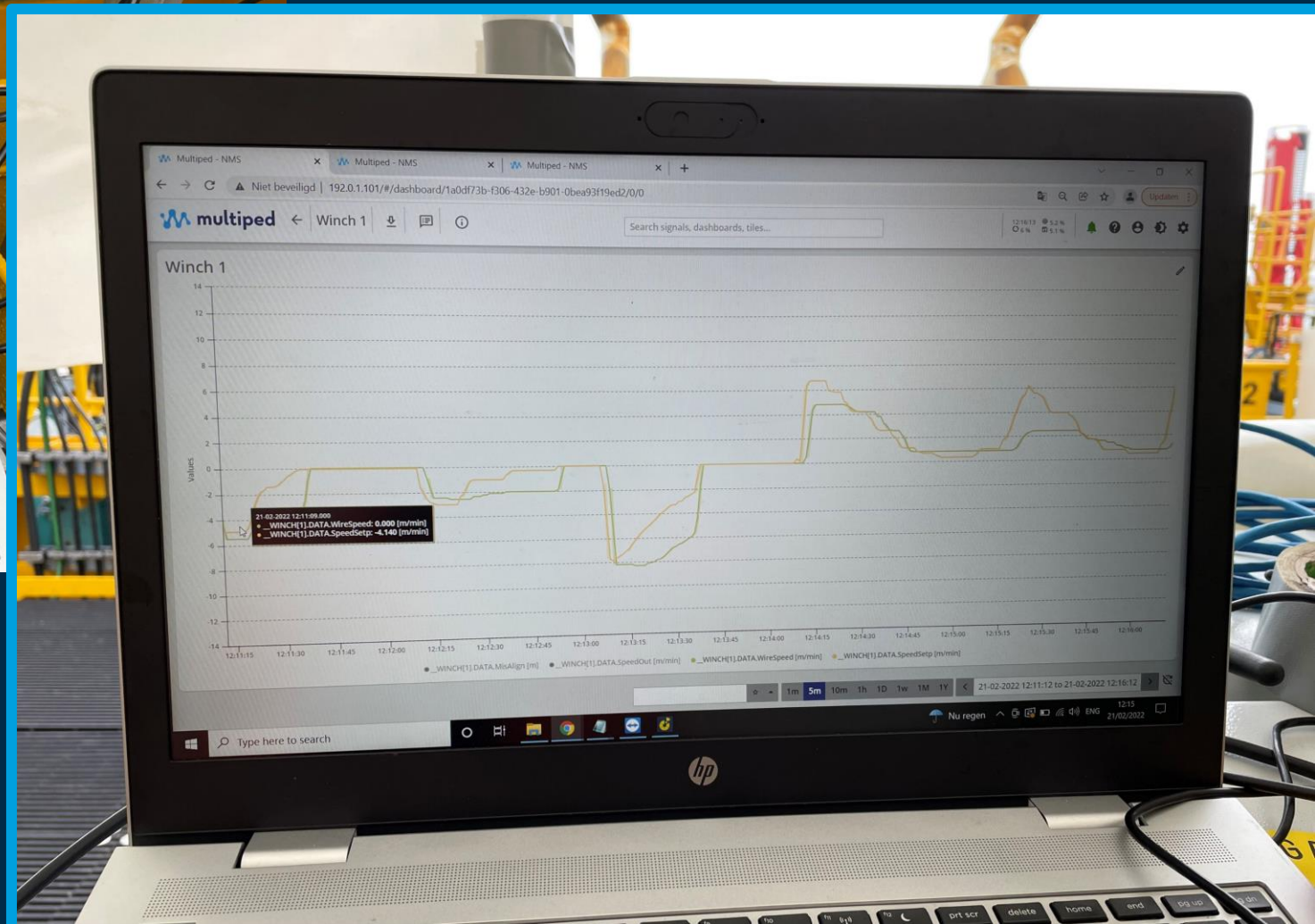
Scalability, dynamics

Reliability, 24/7

Case: commissioning of parallel operating winches

18x

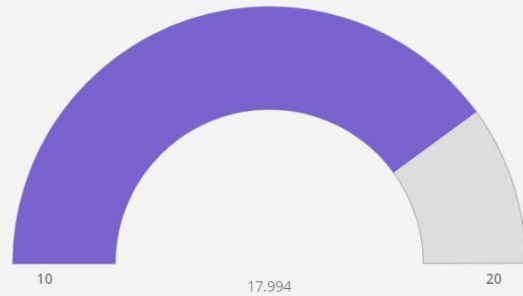




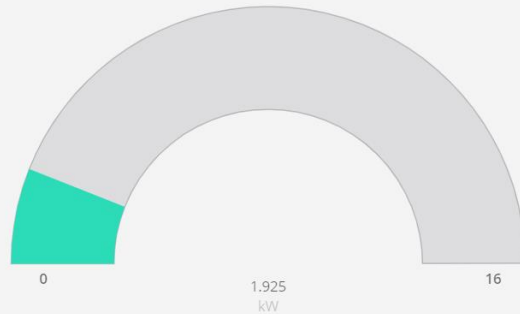
Case: troubleshooting heating system

Control + Response

Heating Control

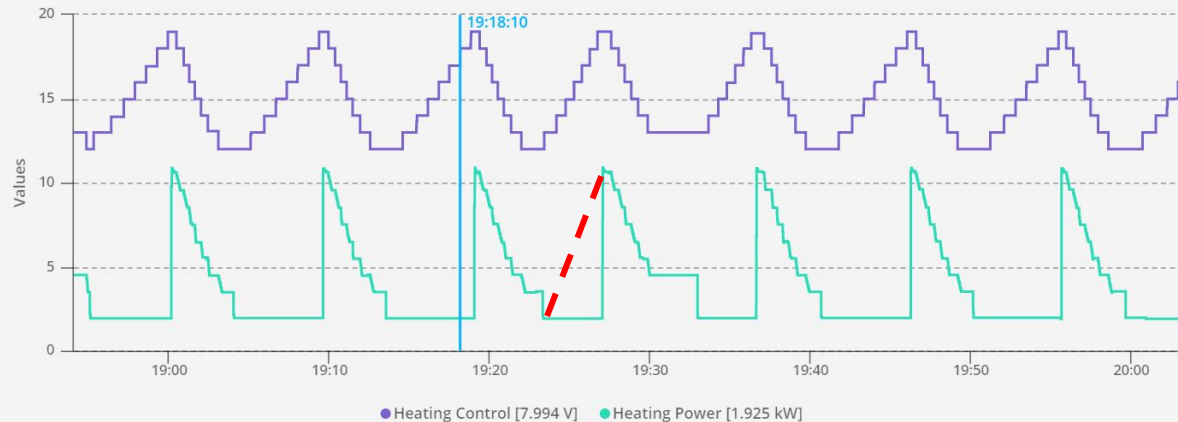


Heating Power

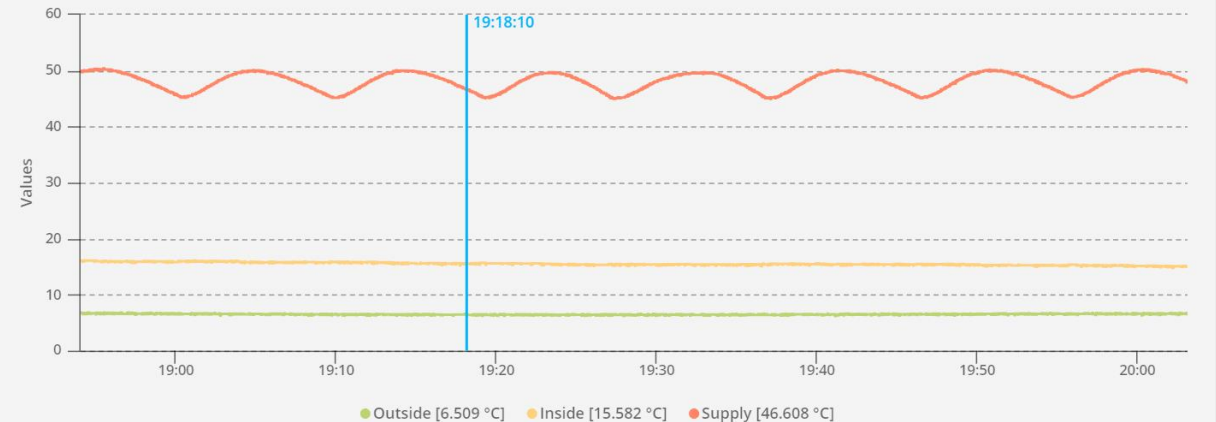


Vessel

Control + Response

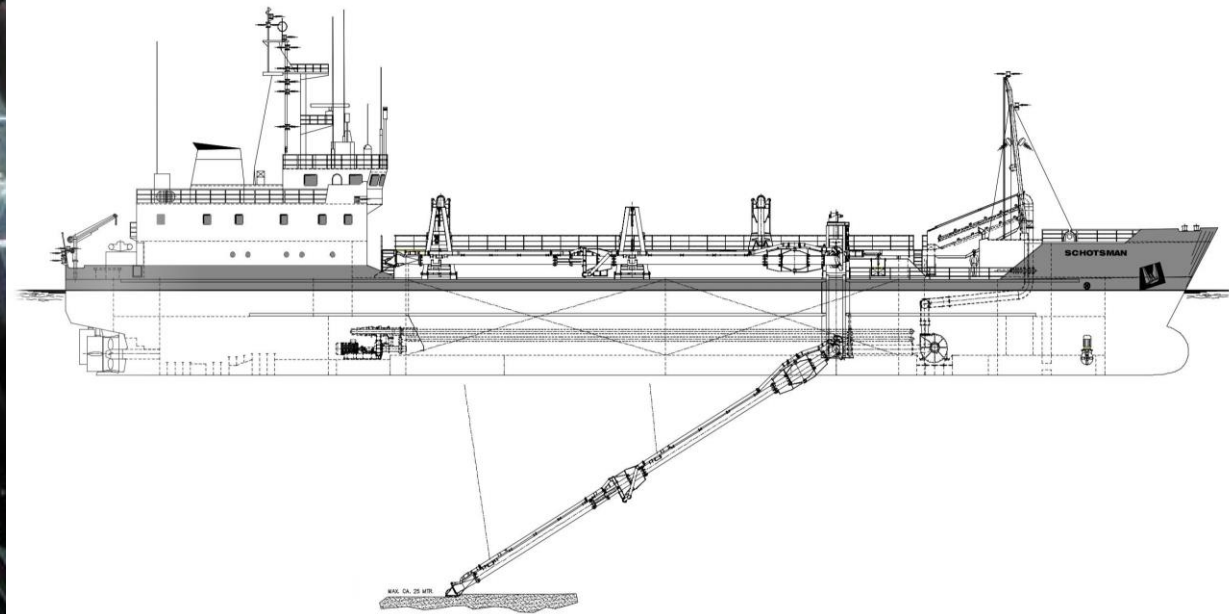


Temperature



Case: reporting dredging activities for authority

Flexible on demand reporting



Lessons learned

User centered development

Store everything?



Future

Trip / operations reporting

Further extensions

Partners and integrations

Standardized maritime data

